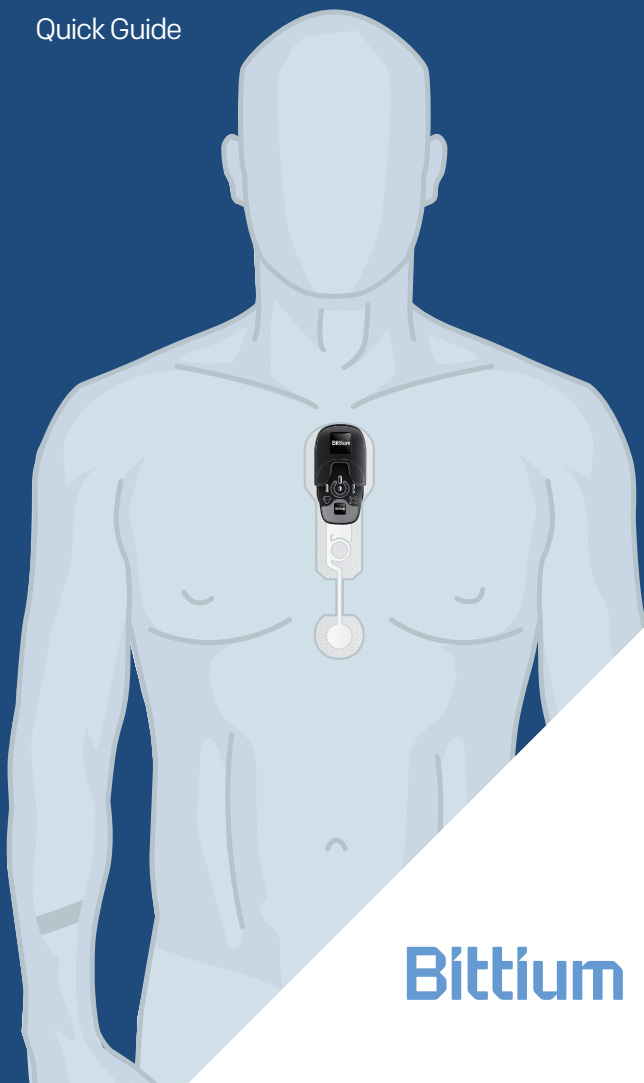


Bittium OmegaSnap™ ECG Electrode

Quick Guide



Bittium

Bittium OmegaSnap™

The Bittium OmegaSnap™ ECG Electrode is intended to be used with the Bittium Faros™ ECG sensor for the purpose of measuring cardiac signals (ECG).

Equipment



Bittium
Faros™
ECG Sensor



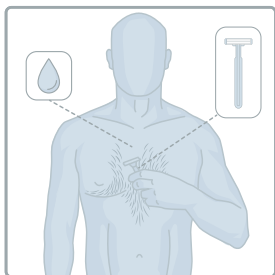
Bittium
OmegaSnap™
Adapter



Bittium
OmegaSnap™
ECG Electrode

Caution!

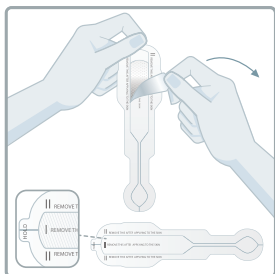
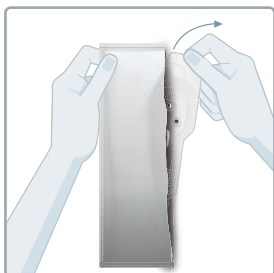
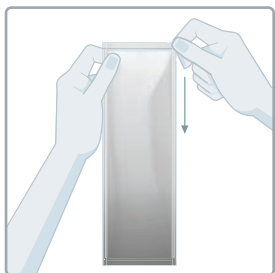
- ▶ Place the electrode onto intact, clean skin only.
- ▶ Do not use body lotion or creams in the electrode area prior to applying the electrode.
- ▶ Do not use outdated electrodes. Please check the date on the packing material.
- ▶ The electrode is for single use only. Reuse of the product may cause contamination, leading to infections.
- ▶ Stop using the Faros sensor and remove the OmegaSnap electrode from the skin if the electrode causes adverse reactions such as skin irritation or rash. If any problems occur, please contact your clinic or person responsible for treatment.
- ▶ Replace the electrode if it does not stick to the skin.
- ▶ Remove the electrode from the skin after measuring.
- ▶ Use the electrode only with the Bittium Faros™ device.
- ▶ The Faros sensor and OmegaSnap adapter must be cleaned between users. The recommended cleaning method: non-alcoholic cleaning and disinfection wipes for medical devices, for example mikroZid® sensitive wipes or SaniCloth AF3 wipes.
- ▶ Follow these instructions. See more detailed instructions in the Faros manual.



1.

If needed, remove excess body hair using a razor or an electric shaver. Clean the skin according to the instructions given by your clinic or the person responsible for treatment. The skin should be clean and dry when attaching the electrode.

- 2.** Make sure the electrode pouch is unopened before use. Tear open the pouch and remove the electrode.

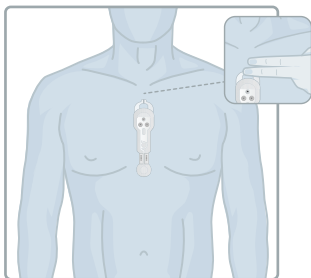


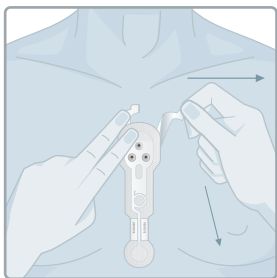
3.

Remove the plastic liner (marked I) of the electrode. Do not touch the adhesive surface with fingers.

4.

Fix the electrode onto the skin. Place the top of the electrode approximately two fingers' width below the suprasternal notch. The bottom of the electrode reaches just above the diaphragm.



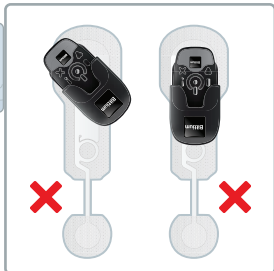
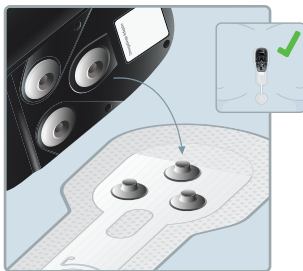


5.

When the electrode is properly attached, remove the liners from the sides (marked II). One at a time, remove to the side while making sure the electrode attaches to the skin.

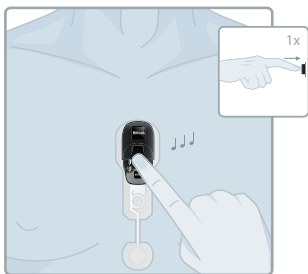
6.

Make sure the surface of the Faros sensor and OmegaSnap adapter are undamaged*. Connect Faros sensor to the adapter. Attach adapter to the electrode. Press the device against the electrode to make sure the snap fasteners are connected.



7.

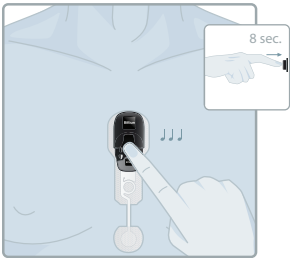
Press and release the power button to start measuring. A sound and blinking green light indicate that measurement has started.



*If you notice any visual damage (e.g. a crack or dent), please contact your clinic for further instructions.

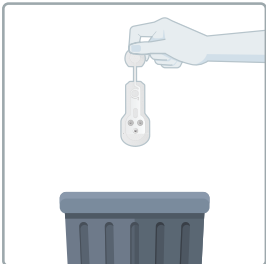
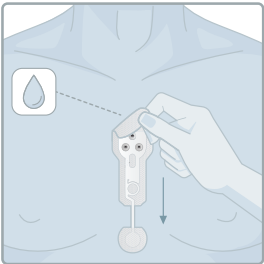
8.

When you want to end the measurement, press and hold the power button for approx. 8 seconds. The device beeps three times and the blinking light turns off.



9.

Remove the electrode off the skin by peeling back an edge of the patch and then gently pulling off the rest of the patch. You can use mild soapy water if necessary. Dispose of the used electrode in accordance with local waste management practices. Return the Faros sensor and the adapter to your clinic or person responsible for treatment.



Symbols

CE mark

Do not reuse

Manufacturing date

Lot number

Manufacturer

Use-by date

Follow instructions for use

Bittium



Bittium Biosignals Oy
Pioneerinkatu 6
70800 Kuopio, FINLAND



Tel: +358 (0)40 3442000
email: bbs@bittium.com or
medical.support@bittium.com

www.bittium.com